

From **1 March 2022**, the "Thailand Pass Registration System (for air travel only)" <https://tp.consular.go.th> is available, with a slight change, for submission to enter Thailand for Thai and foreign nationals from anywhere in the world.

PATIENT SEEKING FOR MEDICAL CARE AT THE HOSPITAL:

- Depending on your vaccination status and condition:
 - Fully vaccinated person with outpatient (OPD) condition is eligible for the Exemption from Quarantine (Test and Go).
 - Unvaccinated person and/or inpatient (IPD) condition has to undergo quarantine in the AQ/AHQ.
- Outpatient:** one can process as a tourist under the Test and Go program at the hotel, after the RT-PCR test on day 1 is negative, you can visit the hospital for an outpatient care accordingly. If you plan to remain in Thailand for more than 5 days, a self ATK test on days 5-6 of your stay is required with the result submitted to the system provided by the government.
- Inpatient:** admission upon arrival in Thailand, one must process under the Alternative Hospital Quarantine (AHQ) program.
- Patient traveling by ground**, please contact the Royal Thai Embassy / Consulate-General near you for the process of Certificate of Entry (COE).



DOCUMENTS REQUIRED FOR THE APPROVAL PROCESS:

1. A patient's passport copy with a certified signature.
2. A companion's passport(s) copy(ies) with a certified signature(s). [max. 3 companions, 1 only preferred]
3. An updated medical report with relevant investigation results.
4. A Referral Letter from a doctor in the current country, stating the need to seek treatment in Thailand.
5. A Vaccination Certificate, stating its name, a manufacturer and lot number of vaccine with a provider's or center's name.*
6. A proof of financial status, e.g. bank statement.
7. An Affidavit of Support.** (Only for patient with companions.)
8. A Letter of Intent and Consent for Quarantine.**
9. A Communicable Diseases Screening Form.**
10. A Travel Advice and Assessment Before Medical and Surgical Care Form.**

*Accepted vaccines:

| | Manufacturer or Name | Number of doses for a completed course |
|-----|------------------------------------|--|
| 1. | AstraZeneca | 2 |
| 2. | COVIL0 | 2 |
| 3. | Comirnaty | 2 |
| 4. | CoronaVac (Sinovac) | 2 |
| 5. | Covishield | 2 |
| 6. | Janssen/Ad26.COVS.S | 1 |
| 7. | Moderna | 2 |
| 8. | Pfizer – BioNTech COVID-19 Vaccine | 2 |
| 9. | Sinopharm Vaccine | 2 |
| 10. | Sputnik V | 2 |
| 11. | Vaxzevria | 2 |

****No. 7 – 10: Prepared by Bumrungrad International, filled out and signed by the patient and/or companions.**

DOCUMENTS REQUIRED PRIOR TO DEPARTURE:

1. A Thailand Pass.
2. A valid Thai visa.
3. An insurance policy, covering COVID-19, minimum amount of USD**20,000** each, for the patient and companion(s).
4. A flight ticket. (if available)
5. A COVID-19 test result within 72 hours before departure. (DO NOT attempt to get the test before the approval is confirmed.)
or A medical certificate as a proof of recovery if infected with COVID-19 for more than 14 days up to 3 months, with 1 vaccination dose after the infection.
6. A fit-to-fly certificate within 72 hours before departure. (Not required by Thai authorities. Please check with your airlines, if this document is needed.)

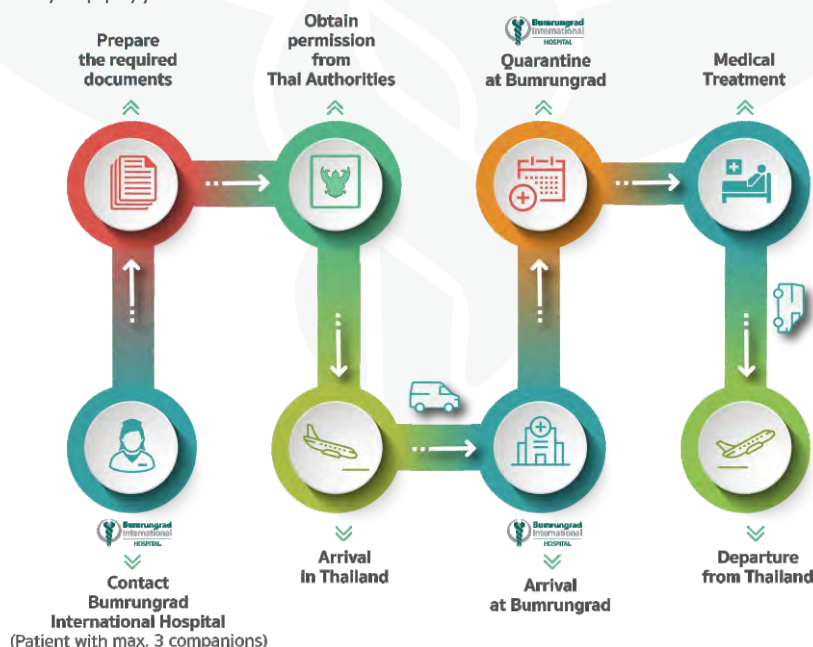
Disclaimer: The final decision regarding the quarantine scheme and number of quarantine days will be determined definitely by the Immigration and Disease Control officers at the port of arrival into Thailand.

PROTOCOL FOR TRAVELERS UNDER THE TEST & GO PROGRAM:

- Individuals who are approved to enter Thailand under the Test & Go program will be exempted from quarantine after the negative RT-PCR test result upon arrival on day 1 is available and then a self ATK test on day 5-6 of your stay is required.
- Eligibility for Test & Go program is subject to change according to the government announcement.

PROTOCOL FOR QUARANTINE IN BUMRUNGRAD INTERNATIONAL HOSPITAL:

- Quarantine for 7 or 10 (plus 1) days upon arrival into Thailand.
- Individuals with completed course of accepted COVID-19 vaccination*, for at least 14 days prior to departure: 7-day quarantine.
- Individuals without completed course of accepted COVID-19 vaccination*: 10-day quarantine.
- Arrival (as shown on ticket) 12:01am midnight to 6:00pm = day 1. Arrival 6:01pm to 12:00am midnight = day 0, the next morning = day 1.
- One companion in the same room with patient. 2nd and 3rd companions in their own rooms, one room each.
- Patient and companions must remain in the room at all times, except for medical investigations and procedures.
- Fever and respiratory tract symptoms monitoring.
- Swabs for COVID-19 (rt-PCR) x 2 times (day 0-1 and 6 / day 0-1 and 8 / day 0-1 and 12 accordingly).
- Positive COVID-19 case admitted in Bumrungrad International on their own expenses (under insurance coverage, conditions may apply).
- **Smoking not allowed.**



QUARANTINE PACKAGE COST (FOR COMPANION ONLY):

7-DAY PACKAGES

Companion with no room
(staying with patient)

16,500 THB

Companion in
Single room

40,500 THB

Companion in
Super Deluxe room*

52,500 THB

10-DAY PACKAGES

Companion with no room
(staying with patient)

19,500 THB

Companion in
Single room

52,500 THB

Companion in
Super Deluxe room*

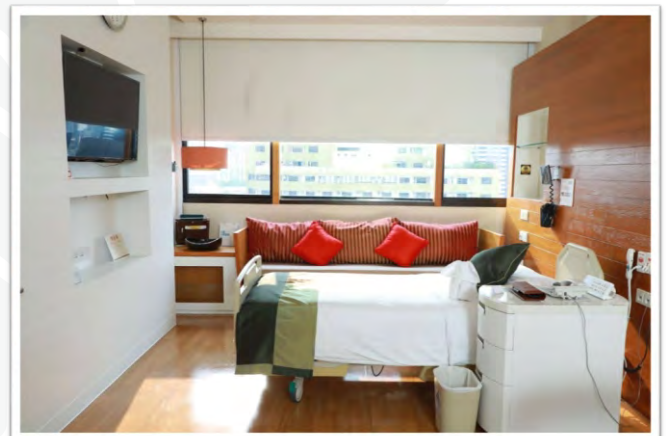
69,000 THB

* Limited number of Super Deluxe room, subject to availability.

Inclusion: Room charge for a number of corresponding nights, 3 meals per day and 2 COVID-19 tests with daily fever monitoring.

Remarks

- A deposit as requested by the hospital for the patient for the treatment, as well as the full amount of quarantine package cost for companion(s) will be required.
- The package price cannot be divided or applied to any discount.
- The quarantine package costs (non-refundable according to usage) are required to be paid and settled before arrival to make a reservation for the package.
- The actual cost and a deposit amount upon arrival may vary, e.g. additional inpatient or ICU charges, depending on the patient's condition.
- The room size: Single room 34 square meters (366 square feet) / Super Deluxe room 44 square meters (474 square feet).
- An additional room charge of **THB 2,000 / night** will be incurred, in case the patient is in the ICU and the 1st companion is in the room alone.
- Available payment options: <https://www.bumrungrad.com/en/patient-finance-and-insurance-information>
- Lists of insurance we accept: <https://www.bumrungrad.com/en/patient-services/insurance>



For more information, please contact
Bumrungrad's Medical Transport Department (24/7):

Tel: +66 2011 3333

Email: MedicalTransport@bumrungrad.com