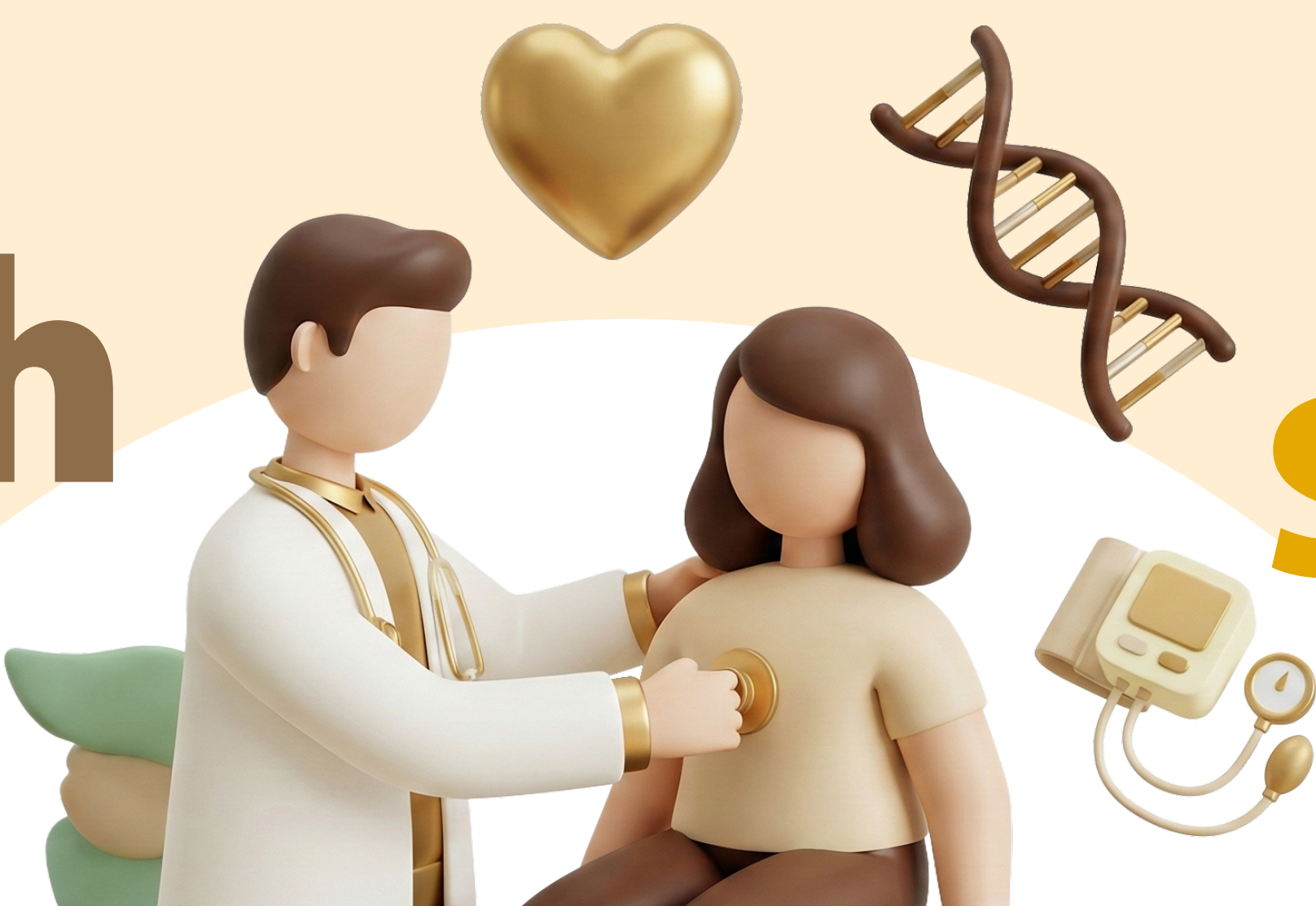


Health Programs



Screening 2026

Examination/Test	Regular	Executive	Executive Wellness	Comprehensive	Comprehensive Advance	Comprehensive Vitality	Holistic 55-69 Y	Holistic 70 + Y Holistic 80 + Y	Micronutrients	Micronutrients Plus BI Holistic	Hormone Panel	Hormone Panel Plus BI
Approximate time to complete program	2-3 hours	3-4 hours	3-4 hours	4-6 hours	4-6 hours	4-6 hours	6-8 hours	6-8 hours				
Vital Signs and Physical Examination	●	●	●	●	●	●	●	●				
Biological age				●	●	●	●	●				
Blood Tests												
• Complete Blood Count (CBC)	●	●	●	●	●	●	●	●				
• Fasting Blood Sugar	●	●	●	●	●	●	●	●				
• Hb A1 C	●	●	●	●	●	●	●	●				
• Lipid (Fats) Profile												
* Cholesterol, HDL and Triglyceride	●	●	●	●	●	●	●	●				
* Cholesterol/HDL ratio	●	●	●	●	●	●	●	●				
* LDL Cholesterol	●	●	●	●	●	●	●	●				
• Gout * Uric acid	●	●	●	●	●	●	●	●				
• Kidney Function Panel												
* Creatinine	●	●	●	●	●	●	●	●				
* BUN	●	●		●	●	●	●	●				
• Liver Function Panel												
* SGOT (AST) and SGPT (ALT)	●	●	●	●	●	●	●	●				
* Alkaline Phosphatase (ALP)		●	●	●	●	●	●	●				
* Total Bilirubin, Albumin, Globulin				●	●	●	●	●				
* Direct bilirubin, Total protein				●	●	●	●	●				
* Gamma GT (GGT)		●		●	●	●	●	●				
• Thyroid Panel * TSH and Free T4				●	●	●	●	●			●	
* Free T3						●					●	●
• Hepatitis Screening												
* HBsAg and HBsAb		●		●	●	●	●					
* Anti HCV				●	●	●	●					
• Tumor Markers												
* CEA for GI Cancer				●	●	●	●	●				
* AFP for Liver Cancer				●	●	●	●	●				
* PSA for Prostate Cancer				● (Male Only)	● (Male Only)	● (Male Only)	● (Male Only)	● (Male Only)				
* CA 125*						● (Female Only)						
Vitamin B12							●	●	●			
25-OH-Vitamin D3/D2 by LC-MS/MS			●		●	●	●	●	●			
Electrolytes : Sodium,Potassium								●				
Calcium			●				●	●	●			
Urine examination	●	●	●	●	●	●	●	●				
Stool Examination with Occult Blood	●	●	●	●	●	●	●	●				
Electrocardiogram (EKG)	●	●	●	●	●	●	●	●				
Exercise Stress Test (EST)		● (Male with EST Only)		● (Male Only)	● (Male Only)	● (Male Only)	● (Male Only)					
Chest X-Ray	●	●	●	●	●	●	●	●				
Ultrasound Whole Abdomen		●	●	●	●	●	●	●				
Digital Mammogram with Ultrasound Breast				● (Female over 40)	● (Female over 40)	● (Female over 40)	● (Female Only)	● (Female under 80)				
Pap Smear and Pelvic Exam+ HPV (Co-test)	● (Female Only)	● (Female Only)	● (Female Only)	● (Female Only)	● (Female Only)	● (Female Only)	● (Female Only)					
Bone Density L-Spine & Hip							● (Female Only)	●				
Ankle Brachial Index (ABI)							●	●				
Microalbuminuria							●	●				
Eye Exam (Acuity and Tonometry) by ophthalmologist in Health Screening Center				●	●	●						
Advance Eye Exam (Acuity and Tonometry, OCT, CLARUS) by ophthalmologist in Eye Center							●	●				
Audiometry							●	●				
• Vitamins & Antioxidants												
* Vitamin A			●						●	●		
* Vitamin C			●						●	●		
* Vitamin E			●						●	●		
* Gamma Tocopherol			●						●	●		
* Beta Carotene			●						●	●		
* Alpha Carotene			●						●	●		
* Coenzyme Q10			●						●	●		
* Lycopene			●						●	●		
• Trace Minerals												
* Chromium									●	●		
* Copper									●	●		
* Ferritin									●	●		
* Magnesium									●	●		
* Selenium									●	●		
* Zinc									●	●		
* Iron									●	●		
• Hormone Level												
* Estradiol (E2)						●					●	●
* Luteinizing Hormone (LH)						●					●	●
* FSH						●					●	●
* Progesterone						● (Female Only)					●	●
* DHEA-S						●					●	●
* Free Testosterone						● (Male Only)					●	●
* IGF-I						●					●	●
* Insulin						●					●	●
* Cortisol						●					●	●
* IGFBP-3 (Blood)											●	●
* Testosterone Total						● (Female Only)						
Folate									●	●		
Lipoprotein (a) ** Designed for initial testing purposes						●						
C-Reactive Protein* (CRP)						●						
Homocysteine						●						
Body Composition Analyzer						●						
SPECIAL PRICE (inclusive of doctor's fee)	7,000	16,300	29,500	Male 34,900	Male 39,500	Male 68,400	Male 49,500	Male 45,900	28,000	25,000	23,800	22,800
*Prices are per person in baht *All prices are subject to change without prior notice *The invoice for this package can be sent directly to your corporate partner company for payment; this package can be used with insurance; ***this package cannot be combined with any other offers, discounts, corporate partner discounts, or promotions.	Female 10,500	Female 20,700	Female 33,200	Female 41,500	Female 44,300	Female 75,000	Female 56,900	Female 46,200				
		Male with EST 22,800		Female (Under 40) 34,000	Female (Under 40) 37,600	Female (Under 40) 67,000	Male (No EST) 42,900	Female (Over 80) 39,000				