

Due to the COVID-19 pandemic, the Thai authorities imposed the regulations regarding a permission to enter the Kingdom of Thailand, including the quarantine upon arrival.

Bumrungrad international hospital remains ready to accept the patients to provide state-of-the-art healthcare as well as quarantine of the patients and their companions during this difficult time.



DOCUMENTS REQUIRED FOR THE APPROVAL PROCESS:

1. A patient's passport copy with a certified signature.
2. A companion's passport(s) copy(ies) with a certified signature(s). [max. 3 companions, 1 only preferred]
3. An updated medical report with relevant investigation results.
4. A Referral Letter from a doctor in the current country, stating the need to seek treatment in Thailand.
5. A Vaccination Certificate, stating its name, a manufacturer and lot number of vaccine with a provider's or center's name.
6. A proof of financial status, e.g. bank statement.
7. An Affidavit of Support.* (Only for patient with companions.)
8. A Letter of Intent and Consent for Quarantine.*
9. A Communicable Diseases Screening Form.*
10. A Travel Advice and Assessment Before Medical and Surgical Care Form.*

***No. 7 – 10: Prepared by Bumrungrad International, filled out and signed by the patient and/or companions.**

Relevant documents will be submitted to the Thai authorities for approval. Once approved, a copy of the stamped **Confirmation Letter** will be sent to the patient to apply for the **Certificate of Entry (COE)** in the current country via the internet <https://coethailand.mfa.go.th>. Thai medical visa application is also required at this stage.

DOCUMENTS REQUIRED PRIOR TO DEPARTURE:

1. The Certificate of Entry (COE).
2. A valid Thai visa.
3. An insurance policy covering COVID-19, minimum amount of USD100,000 each, for the patient and companion(s).
4. A flight ticket. (if available)
5. A COVID-19 test result within 72 hours before departure. (**DO NOT** attempt to get the test before the approval is confirmed.)
6. A Fit-to-fly certificate within 72 hours before departure. (Not required by Thai authorities. Please check with your airlines, if this document is needed.)

PROTOCOL FOR QUARANTINE IN BUMRUNGRAD INTERNATIONAL HOSPITAL:

- Quarantine for 7, 10 or 14 (plus 1-2) days upon arrival into Thailand.
- Individuals with completed course of accepted COVID-19 vaccination*, for at least 14 days prior to departure: 7-day quarantine.
- Individuals without completed course of accepted COVID-19 vaccination*: 10-day quarantine.
- Individual who travel by ground transportation via borders: 14-day quarantine.
- Arrival (as shown on ticket) 12:01am midnight to 6:00pm = day 1. Arrival 6:01pm to 12:00am midnight = day 0, the next morning = day 1.
- One companion in the same room with patient. 2nd and 3rd companions in their own rooms, one room each.
- Patient and companions must remain in the room at all times, except for medical investigations and procedures.
- Fever and respiratory tract symptoms monitoring.
- Swabs for COVID-19 (rt-PCR) x 2 times (day 0-1 and 6 / day 0-1 and 8 / day 0-1 and 12 accordingly).
- Positive COVID-19 case admitted in Bumrungrad International on their own expenses (under insurance coverage, conditions may apply).
- **Smoking not allowed.**
- **Premature return / repatriation not allowed by Thai authorities.**

*Accepted vaccines:

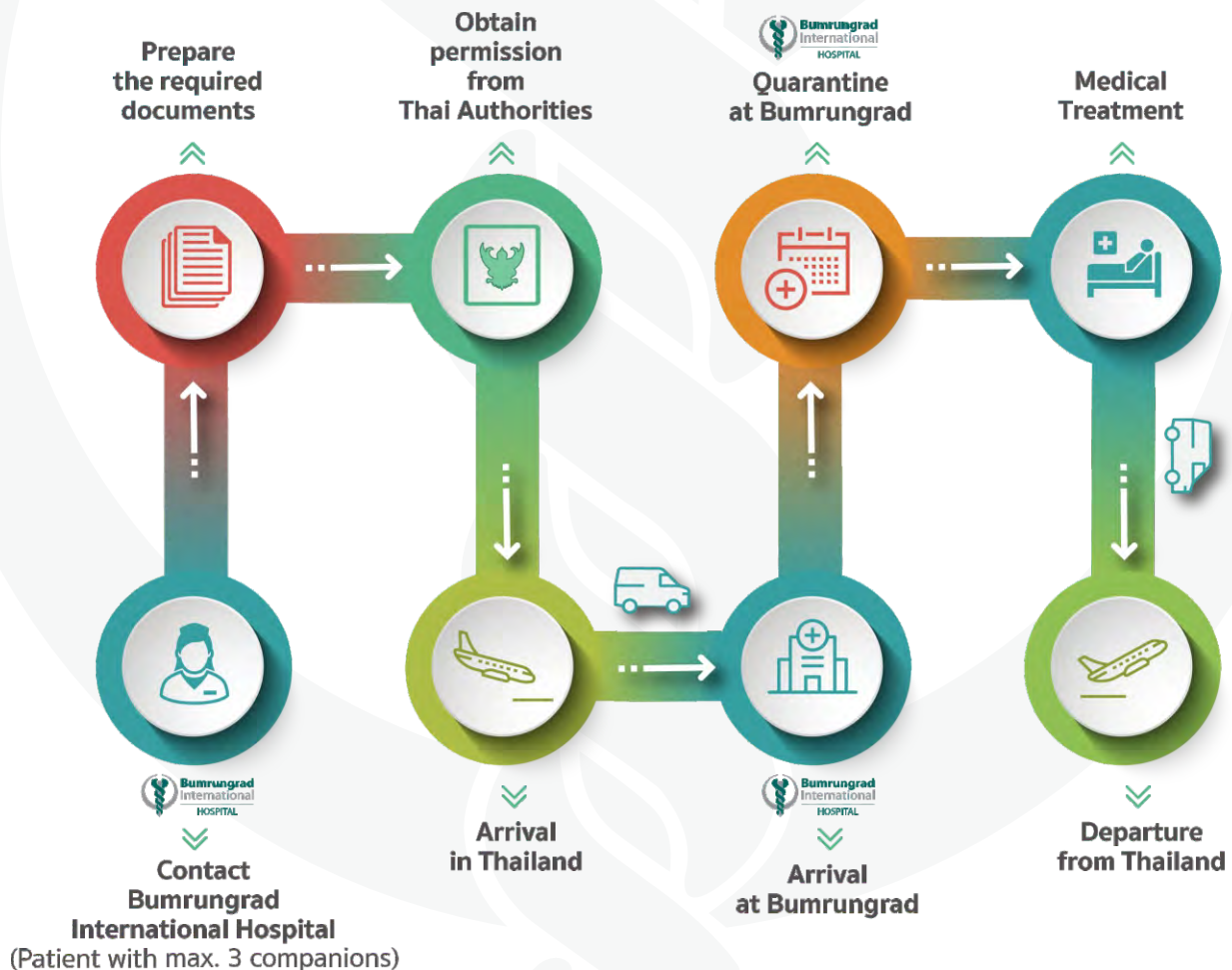
N	Manufacturer	Name	N of doses for a completed course
1.	Sinovac	SARS-CoV-2 vaccine (CoronaVac)	2
2.	AstraZeneca/Oxford	AZD1222	2
3.	SK BIOSCIENCE AstraZeneca/Oxford	AZD1222	2
4.	Pfizer/BioNTech	BNT162b2/CORMIRNATY Tozinameran (INN)	2
5.	Serum Institute of India	Covishield (ChAdOx1_nCoV19)	2
6.	Janssen Pharmaceutical (Johnson & Johnson)	Ad26.COV2.S	1
7.	Moderna	mRNA-1273	2
8.	Sinopharm/BIBP	SARS-CoV-2 Vaccine (Vero Cell), Inactivated (InCoV)	2
9	Gamaleya Research Institute of Epidemiology and Microbiology	Sputnik V	2

Foreign nationals permitted to enter Thailand as patients can only be quarantined in the hospital.

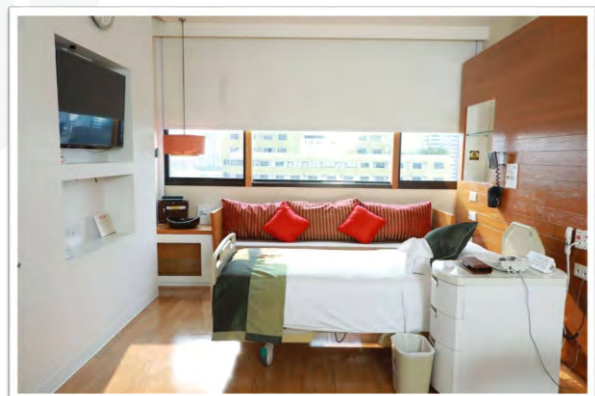
IN ORDER TO MITIGATE THE RISK OF COVID-19 THROUGHOUT THE TRAVEL, INCLUDING GROUND AND AIR TRANSPORTATION, PATIENTS AND THEIR COMPANION(S) SHOULD:

- Wear mask and maintain appropriate distancing in the public area at all times.
- Wash their hands often with soap and water for at least 20 seconds.
- If soap and water are unavailable, use an alcohol-based hand sanitizer with at least 60% alcohol content.
- Bring sanitation wipes with them. Avoid touching their eyes, hands and mouth. Cover their mouth and nose with their bent elbow or tissue when coughing or sneezing.
- In addition to above practices, wear mask and wipe their seats and tray with sanitation wipes.

AHQ FLOW



*The treatment can be commenced during or after the quarantine period, depending on the care team's consideration.



PACKAGE COST

7-DAY PACKAGES

Patient in single room	1 st companion stay with patient	2 nd companion with a single room	Patient in Super Deluxe room*	Companion with a Super Deluxe room*
41,000 THB	16,000 THB	40,000 THB	53,000 THB	52,000 THB

10-DAY PACKAGES

Patient in single room	1 st companion stay with patient	2 nd companion with a single room	Patient in Super Deluxe room*	Companion with a Super Deluxe room*
53,000 THB	19,000 THB	52,000 THB	69,500 THB	68,500 THB

14-DAY PACKAGES

Patient in single room	1 st companion stay with patient	2 nd companion with a single room	Patient in Super Deluxe room*	Companion with a Super Deluxe room*
69,000 THB	23,000 THB	68,000 THB	91,500 THB	90,500 THB

* Limited number of Super Deluxe room, subject to availability.

Inclusion: Room charge for a number of corresponding nights (quarantine only, no inpatient care), 3 meals per day and 2 COVID-19 tests with daily fever monitoring.

Remarks

- A deposit of THB 100,000.00 for the patient (for the quarantine package and treatment), as well as the full amount of quarantine package cost for companion(s) will be requested.
- The package price cannot be divided or applied to any discount.
- The quarantine package costs (non-refundable according to usage) are required to be paid and settled before arrival to make a reservation for AHQ package.
- The actual cost and a deposit amount upon arrival may vary, e.g. additional inpatient or ICU charges, depending on the patient's condition.
- The doctor's fee upon arrival is included.
- The specialists' fees and other treatment costs not included in the package.
- The room size: Single room 34 square meters (366 square feet) / Super Deluxe room 44 square meters (474 square feet).
- An additional room charge of **THB 2,000 / night** will be incurred, in case the patient is in the ICU and the 1st companion is in the room alone.
- Available payment options: <https://www.bumrungrad.com/en/patient-finance-and-insurance-information>
- Lists of insurance we accept: <https://www.bumrungrad.com/en/patient-services/insurance>

**For more information, please contact
Bumrungrad's Medical Transport Department (24/7):**

Tel: +66 2011 3333

Email: MedicalTransport@bumrungrad.com