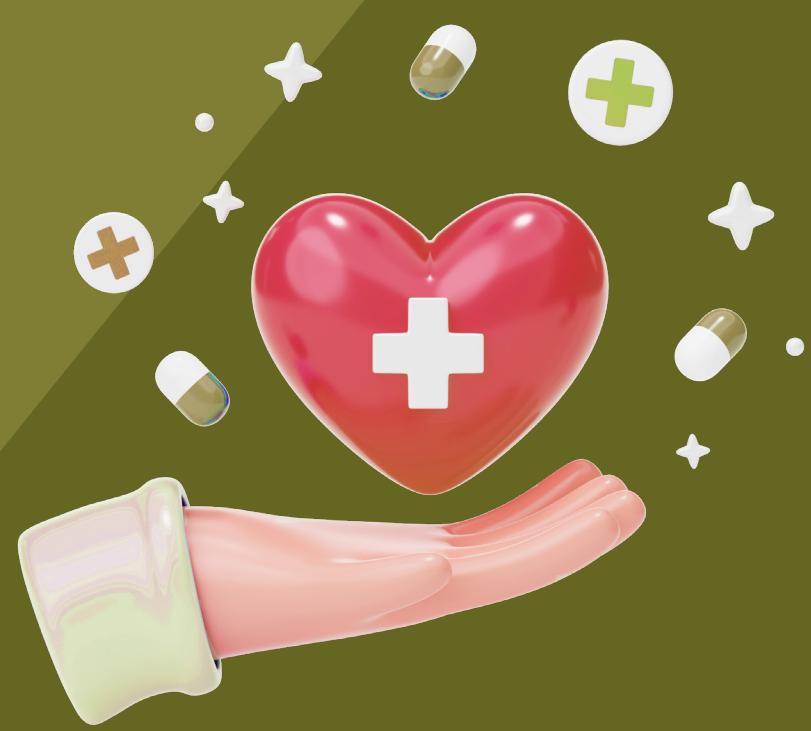




Health Screening Programs 2025



Examination/Test	Regular	Executive	Executive Wellness	Comprehensive	Comprehensive Advance	Comprehensive Vitality	Holistic 55-69 Y	Holistic 70 + Y Holistic 80 + Y	Micronutrients	Micronutrients Plus BI Holistic	Hormone Panel	Hormone Panel Plus BI
Approximate time to complete program	2-3 hours	3-4 hours	3-4 hours	4-6 hours	4-6 hours	4-6 hours	6-8 hours	6-8 hours				
Vital Signs and Physical Examination	●	●	●	●	●	●	●	●				
Blood Tests												
• Complete Blood Count (CBC)	●	●	●	●	●	●	●	●				
• Fasting Blood Sugar	●	●	●	●	●	●	●	●				
• Hb A1 C	●	●	●	●	●	●	●	●				
• Lipid (Fats) Profile												
* Cholesterol, HDL and Triglyceride	●	●	●	●	●	●	●	●				
* Cholesterol/HDL ratio	●	●	●	●	●	●	●	●				
* LDL Cholesterol	●	●	●	●	●	●	●	●				
• Gout * Uric acid	●	●	●	●	●	●	●	●				
• Kidney Function Panel												
* Creatinine	●	●	●	●	●	●	●	●				
* BUN	●	●		●	●	●	●	●				
• Liver Function Panel												
* SGOT (AST) and SGPT (ALT)	●	●	●	●	●	●	●	●				
* Alkaline Phosphatase (ALP)		●	●	●	●	●	●	●				
* Total Bilirubin, Albumin, Globulin				●	●	●	●	●				
* Direct bilirubin, Total protein				●	●	●	●	●				
* Gamma GT (GGT)		●		●	●	●	●	●				
• Thyroid Panel *TSH and Free T4				●	●	●	●	●			●	
* Free T3						●					●	●
• Hepatitis Screening												
* HBsAg and HBsAb		●		●	●	●	●					
* Anti HCV				●	●	●	●					
• Tumor Markers												
* CEA for GI Cancer				●	●	●	●	●				
* AFP for Liver Cancer				●	●	●	●	●				
* PSA for Prostate Cancer				● (Male Only)	● (Male Only)	● (Male Only)	● (Male Only)	● (Male Only)				
* CA 125*						● (Female Only)						
Vitamin B12							●	●	●			
25-OH-Vitamin D3/D2 by LC-MS/MS			●		●	●	●	●	●			
Electrolytes : Sodium,Potassium								●				
Calcium			●				●	●	●			
Urine examination	●	●	●	●	●	●	●	●				
Stool Examination with Occult Blood	●	●	●	●	●	●	●	●				
Electrocardiogram (EKG)	●	●	●	●	●	●	●	●				
Exercise Stress Test (EST)		● (Male with EST Only)		● (Male Only)	● (Male Only)	● (Male Only)	● (Male Only)					
Chest X-Ray	●	●	●	●	●	●	●	●				
Ultrasound Whole Abdomen		●	●	●	●	●	●	●				
Digital Mammogram with Ultrasound Breast				● (Female over 40)	● (Female over 40)	● (Female over 40)	● (Female Only)	● (Female under 80)				
Pap Smear and Pelvic Exam	● (Female Only)	● (Female Only)	● (Female Only)	● (Female Only)		● (Female Only)	● (Female Only)					
Pap Smear and Pelvic Exam+ HPV (Co-test)					● (Female Only)							
Bone Density L-Spine & Hip							● (Female Only)	●				
Ankle Brachial Index (ABI)							●	●				
Microalbuminuria							●	●				
Eye Exam (Acuity and Tonometry) by ophthalmologist in Health Screening Center				●	●	●						
Advance Eye Exam (Acuity and Tonometry, OCT, CLARUS) by ophthalmologist in Eye Center							●	●				
Audiometry							●	●				
• Vitamins & Antioxidants												
* Vitamin A			●						●	●		
* Vitamin C			●						●	●		
* Vitamin E			●						●	●		
* Gamma Tocopherol			●						●	●		
* Beta Carotene			●						●	●		
* Alpha Carotene			●						●	●		
* Coenzyme Q10			●						●	●		
* Lycopene			●						●	●		
• Trace Minerals												
* Chromium									●	●		
* Copper									●	●		
* Ferritin									●	●		
* Magnesium									●	●		
* Selenium									●	●		
* Zinc									●	●		
* Iron									●	●		
• Hormone Level												
* Estradiol (E2)						●					●	●
* Luteinizing Hormone (LH)						●					●	●
* FSH						●					●	●
* Progesterone						● (Female Only)					●	●
* DHEA-S						●					●	●
* Free Testosterone						● (Male Only)					●	●
* IGF-I						●					●	●
* Insulin						●					●	●
* Cortisol						●					●	●
* IGFBP-3 (Blood)											●	●
* Testosterone Total						● (Female Only)						
Folate									●	●		
Lipoprotein (a) ** Designed for initial testing purposes						●						
C-Reactive Protein* (CRP)						●						
Homocysteine						●						
Body Composition Analyzer						●						
SPECIAL PRICE (inclusive of doctor's fee)	7,000	16,100	28,500	Male 32,400	Male 36,900	Male 65,700	Male 47,000	Male 43,700	27,000	24,000	22,800	21,800
*Prices are per person in baht *All prices are subject to change without prior notice *The invoice for this package can be sent directly to your corporate partner company for payment; this package can be used with insurance; ***this package cannot be combined with any other offers, discounts, corporate partner discounts, or promotions.	Female 8,300	Female 18,600	Female 31,000	Female 36,300	Female 41,700	Female 69,800	Female 52,100	Female 44,000				
		Male with EST 22,000		Female (Under 40) 28,700	Female (Under 40) 35,000	Female (Under 40) 62,100	Male (No EST) 40,600	Female (Over 80) 36,800				