

Due to the COVID-19 pandemic, the Thai authorities imposed the regulations regarding a permission to enter the Kingdom of Thailand, including the quarantine upon arrival.

Bumrungrad international hospital remains ready to accept the patients to provide state-of-the-art healthcare as well as quarantine of the patients and their companions during this difficult time.



DOCUMENTS REQUIRED FOR THE APPROVAL PROCESS:

1. A patient's passport copy with a certified signature.
2. A companion's passport(s) copy(ies) with a certified signature(s). [max. 3 companions, 1 only preferred]
3. An updated medical report with relevant investigation results.
4. A Referral Letter from a doctor in the current country, stating the need to seek treatment in Thailand.
5. A Vaccination Certificate, stating its name, a manufacturer and lot number of vaccine with a provider's or center's name.
6. A proof of financial status, e.g. bank statement.
7. An Affidavit of Support.* (Only for patient with companions.)
8. A Letter of Intent and Consent for Quarantine.*
9. A Communicable Diseases Screening Form.*
10. A Travel Advice and Assessment Before Medical and Surgical Care Form.*

***No. 7 – 10: Prepared by Bumrungrad International, filled out and signed by the patient and/or companions.**

Relevant documents will be submitted to the Thai authorities for approval. Once approved, a copy of the stamped **Confirmation Letter** will be sent to the patient to apply for the **Certificate of Entry (COE)** in the current country via the internet <https://coethailand.mfa.go.th>. Thai medical visa application is also required at this stage.

DOCUMENTS REQUIRED PRIOR TO DEPARTURE:

1. The Certificate of Entry (COE).
2. A valid Thai visa.
3. An insurance policy covering COVID-19, minimum amount of USD100,000 each, for the patient and companion(s). **[Complimentary from the hospital]**
4. A flight ticket. (if available)
5. A COVID-19 test result within 72 hours before departure. (**DO NOT** attempt to get the test before the approval is confirmed.)
6. A Fit-to-fly certificate within 72 hours before departure. (Not required by Thai authorities. Please check with your airlines, if this document is needed.)



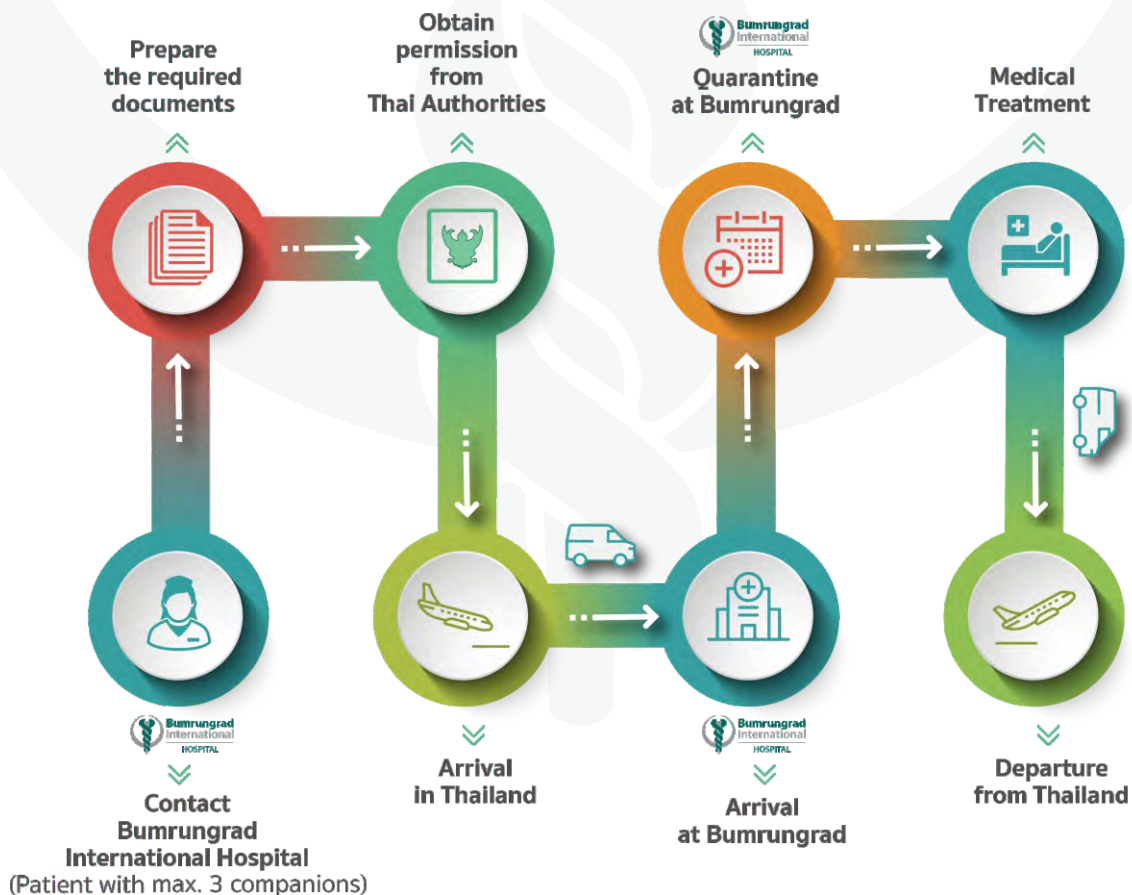
PROTOCOL FOR QUARANTINE IN BUMRUNGRAD INTERNATIONAL HOSPITAL:

- Quarantine for 14 (plus 1-2) days upon arrival into Thailand.
- Arrival (as shown on ticket) 12:01am midnight to 6:00pm = day 1. Arrival 6:01pm to 12:00am midnight = day 0, the next morning = day 1.
- Completion of quarantine on day 15.
- One companion in the same room with the patient. 2nd and 3rd companions in their own rooms, one room each.
- A patient and companions must remain in the room at all times, except for medical investigations and procedures.
- A fever and respiratory tract symptoms monitoring.
- Swabs for COVID-19 (rt-PCR) x 3 times: on day 0-1, 7 and 14).
- Positive COVID-19 case admitted in Bumrungrad International on their own expenses (under insurance coverage, conditions may apply).
- **Smoking not allowed.**
- **Premature return / repatriation not allowed by Thai authorities.**

Foreign nationals permitted to enter Thailand as patients can only be quarantined in the hospital.

IN ORDER TO MITIGATE THE RISK OF COVID-19 THROUGHOUT THE TRAVEL, INCLUDING GROUND AND AIR TRANSPORTATION, PATIENTS AND THEIR COMPANION(S) SHOULD:

- Wear mask and maintain appropriate distancing in the public area at all times.
- Wash their hands often with soap and water for at least 20 seconds.
- If soap and water are unavailable, use an alcohol-based hand sanitizer with at least 60% alcohol content.
- Bring sanitation wipes with them. Avoid touching their eyes, hands and mouth. Cover their mouth and nose with their bent elbow or tissue when coughing or sneezing.
- In addition to above practices, wear mask and wipe their seats and tray with sanitation wipes.





ALTERNATIVE HOSPITAL QUARANTINE (AHQ) AT BUMRUNGRAD INTERNATIONAL HOSPITAL

Patients and their companions, who are currently in the following countries, are allowed to submit for consideration to enter the Kingdom of Thailand for Alternative Hospital Quarantine (AHQ)

Ref: Ministry of Public Health, Thailand as of 10 June, 2021

- | | | | | | |
|----|---------------------|----|------------------|-----|------------------------------|
| 1 | Afghanistan | 45 | Grenada | 89 | Portugal |
| 2 | Albania | 46 | Guatemala | 90 | Qatar |
| 3 | Algeria | 47 | Guinea | 91 | Romania |
| 4 | Andorra | 48 | Guyana | 92 | Russia |
| 5 | Angola | 49 | Haiti | 93 | Rwanda |
| 6 | Antigua and Barbuda | 50 | Honduras | 94 | Saint Kitts and Nevis |
| 7 | Armenia | 51 | Hong Kong | 95 | Saint Lucia |
| 8 | Australia | 52 | Iceland | 96 | Saint Vincent and Grenadines |
| 9 | Austria | 53 | Indonesia | 97 | San Marino |
| 10 | Azerbaijan | 54 | Iran | 98 | Saudi Arabia |
| 11 | Bahamas | 55 | Ireland | 99 | Senegal |
| 12 | Bahrain | 56 | Israel | 100 | Seychelles |
| 13 | Barbados | 57 | Jamaica | 101 | Singapore |
| 14 | Belarus | 58 | Japan | 102 | Slovenia |
| 15 | Belize | 59 | Kazakhstan | 103 | South Africa |
| 16 | Benin | 60 | Kuwait | 104 | South Korea |
| 17 | Bhutan | 61 | Kyrgyz | 105 | Spain |
| 18 | Bolivia | 62 | Laos | 106 | Sri Lanka |
| 19 | Botswana | 63 | Latvia | 107 | Sudan |
| 20 | Brunei Darussalam | 64 | Lesotho | 108 | Suriname |
| 21 | Cabo Verde | 65 | Liberia | 109 | Switzerland |
| 22 | Cambodia | 66 | Libya | 110 | Syria |
| 23 | Canada | 67 | Lithuania | 111 | Taiwan |
| 24 | Chile | 68 | Luxemburg | 112 | Tajikistan |
| 25 | China | 69 | Macau | 113 | Tanzania |
| 26 | Colombia | 70 | Malaysia | 114 | Thailand |
| 27 | Congo | 71 | Mali | 115 | Togo |
| 28 | Costa Rica | 72 | Malta | 116 | Trinidad and Tobago |
| 29 | Côte d'Ivoire | 73 | Mauritius | 117 | Tunisia |
| 30 | Croatia | 74 | Monaco | 118 | Uganda |
| 31 | Cuba | 75 | Mongolia | 119 | United Arab Emirates |
| 32 | Cyprus | 76 | Montenegro | 120 | United Kingdom |
| 33 | Denmark | 77 | Morocco | 121 | United States of America |
| 34 | Dominican | 78 | Mozambique | 122 | Uzbekistan |
| 35 | Egypt | 79 | Myanmar | 123 | Venezuela |
| 36 | El Salvador | 80 | Namibia | 124 | Vietnam |
| 37 | Equatorial Guinea | 81 | New Zealand | 125 | Yemen |
| 38 | Eritrea | 82 | Nicaragua | 126 | Zambia |
| 39 | Eswatini | 83 | Niger | 127 | Zimbabwe |
| 40 | Fiji | 84 | Norway | | |
| 41 | Finland | 85 | Oman | | |
| 42 | Georgia | 86 | Panama | | |
| 43 | Germany | 87 | Papua New Guinea | | |
| 44 | Greece | 88 | Peru | | |

PACKAGE COST

Cost for the patient varies, depending on the condition.

Package cost for a companion staying with the patient in the same room: **THB 30,500** (only 1 companion is encouraged, during the suspension.)

Package cost for a companion with his/her own room (if any*): **THB 68,000** each.

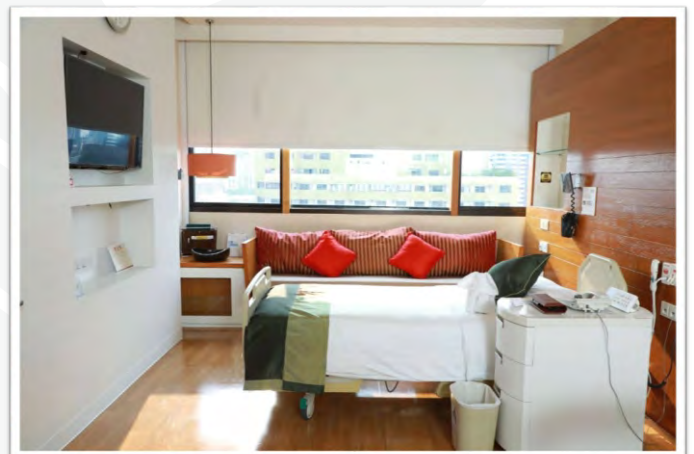
***2 rooms:** the patient and the 1st companion stay in 1 room and the 2nd companion in another room.

***3 rooms:** the patient and the 1st companion stay in 1 room while the 2nd and 3rd companions in one room each.

Inclusion: Room charge for 15 nights (quarantine only, no inpatient care), 3 meals per day and 3 COVID-19 tests with daily fever monitoring.

Remarks

- A deposit of THB 100,000.00 for the patient (for the quarantine package and treatment), as well as the full amount of quarantine package cost for companion(s) will be requested.
- The package price cannot be divided or applied to any discount.
- The quarantine package costs (non-refundable according to usage) are required to be paid and settled before arrival to make a reservation for AHQ package.
- The actual cost and a deposit amount upon arrival may vary, e.g. additional inpatient or ICU charges, depending on the patient's condition.
- The doctor's fee upon arrival is included.
- The specialists' fees and other treatment costs not included in the package.
- The room size: 30 sq. m (323 sq. feet).
- An additional room charge of **THB 2,000 / night** will be incurred, in case the patient is in the ICU and the 1st companion is in the room alone.
- Available payment options: <https://www.bumrungrad.com/en/patient-finance-and-insurance-information>
- Lists of insurance we accept: <https://www.bumrungrad.com/en/patient-services/insurance>



**For more information, please contact
Bumrungrad's Medical Transport Department (24/7):**

Tel: +66 2011 3333

Email: MedicalTransport@bumrungrad.com